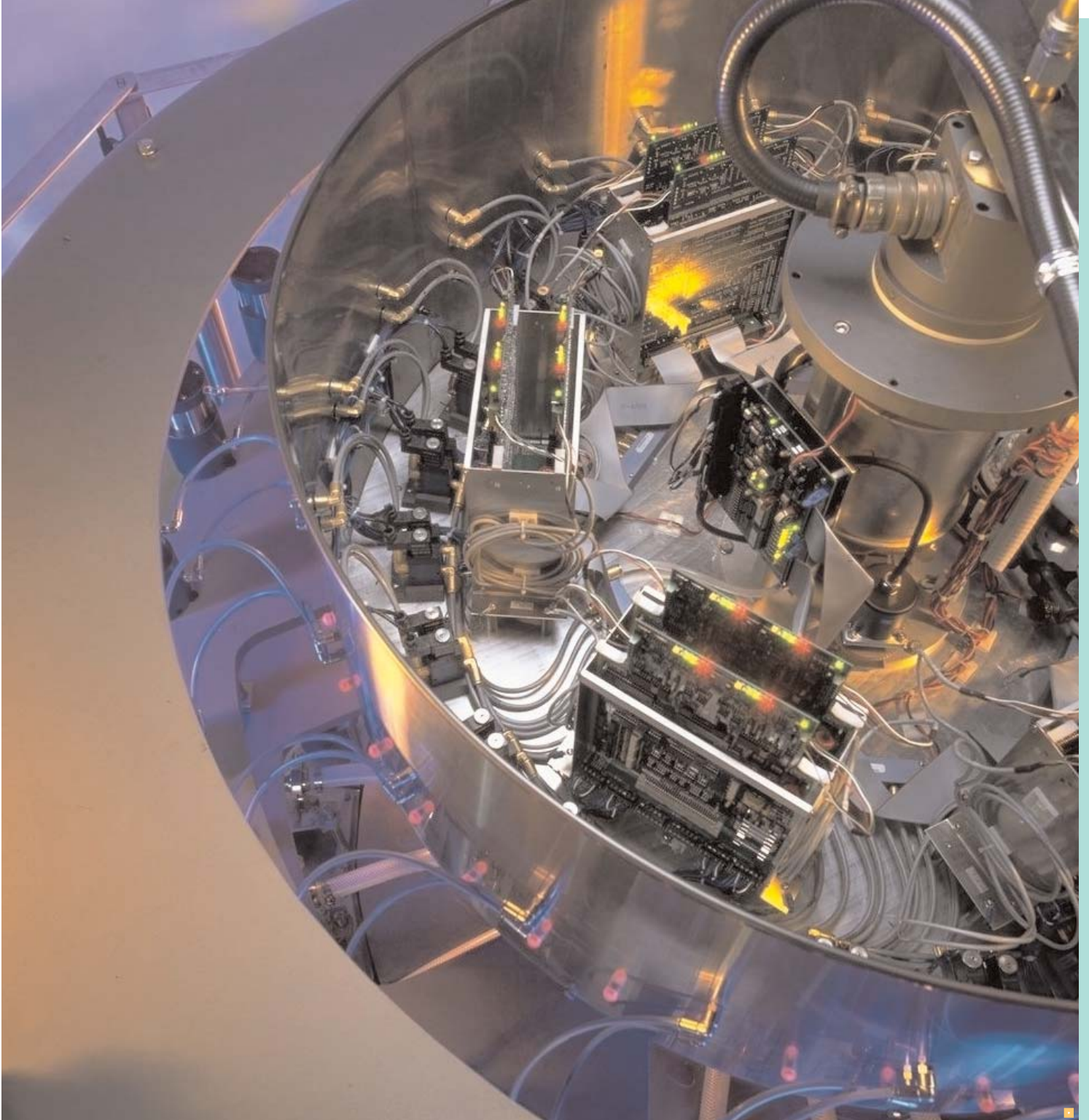




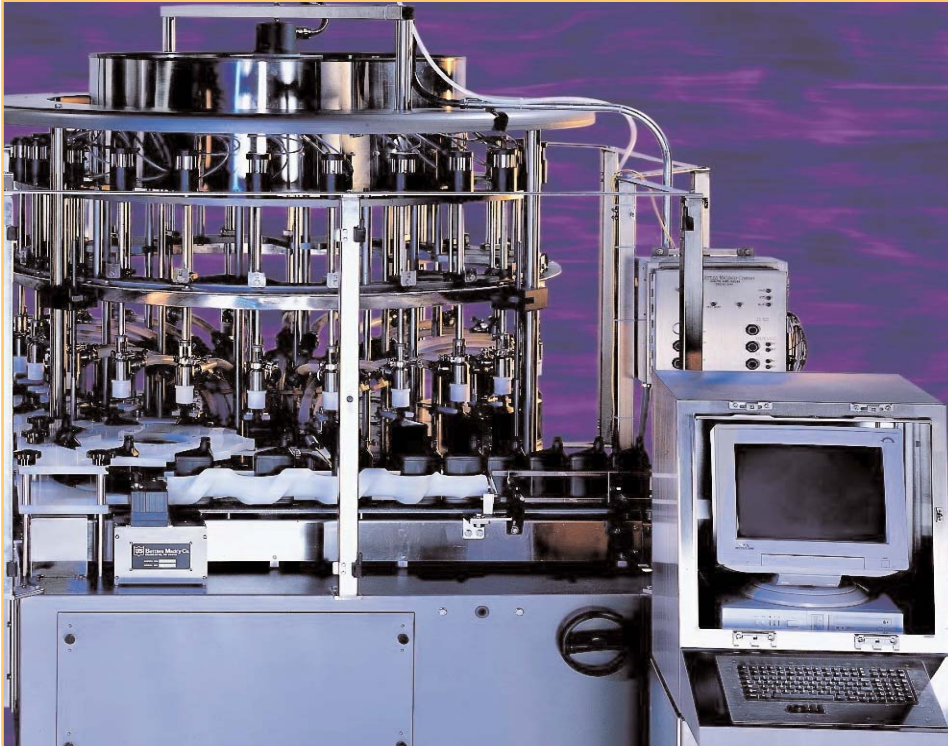
Weigh Scale Filler





Precise, Fast, Durable

Holding the U.S. patent for the invention of the Weigh Scale Filler, U.S. Bottlers offers the most advanced filling technology available today. Fast and accurate, the rotary weight-sensing filler are setting the performance standard for the packaging industry. A simple mechanical design combined with robust and sophisticated electronics offer reliable performance.



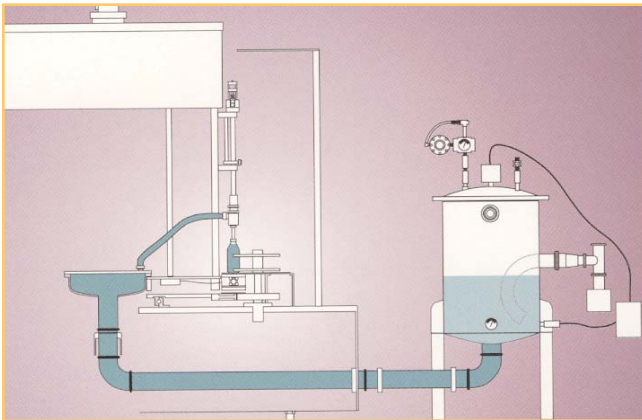
PRINCIPLES OF DESIGN

The Rotary Weigh Scale Filler design is based on filling every container to a pre-determined weight. This provides the most accurate fill weights regardless of fluctuations in product or container characteristics.

PRINCIPLES OF OPERATION

The containers are fed onto the Rotary Weigh Scale Filler, separated, then positioned on individual load cell platforms under special custom designed filling valves. Based on 'bottle present' information, the filling process begins at a filling rate designed to suit the container's particular shape and dimensions and the product flow characteristics. Based on active weight analysis, once the target weight is achieved the filling process stops and the full containers are discharged from the machine.

Available in several frame sizes, as well as in monoblock configuration the Rotary Weigh Scale Fillers operate at speeds of up to 500 BPM.



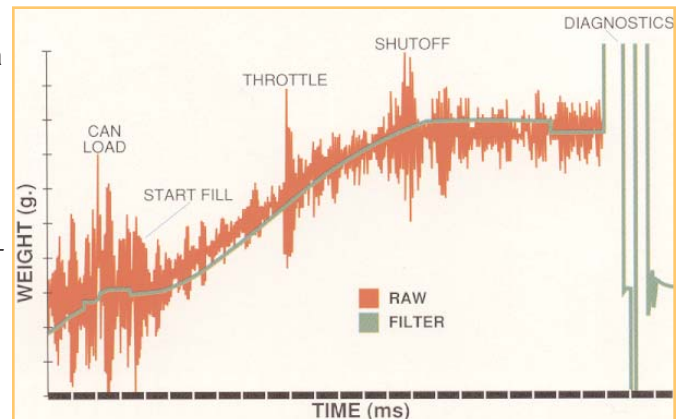
Feature: Simple and straightforward liquid systems, custom engineered for every application.
Benefit: Superior control over the filling process, no overhead bowl, easy access for cleaning and maintenance.

Feature: Superior design filling valves with advanced CIP capabilities.
Benefit: Consistent and accurate fill weights, and reduced cleaning and maintenance requirement.



Feature: Unique Windows-based software with powerful reporting capabilities.
Benefit: Continuous monitoring and self-adjustment of filling process, and advanced packaging line management tool.

Feature: Tool-less, quick-release container handling attachments.
Benefit: Easy and fast changeover between production runs.



U.S. Bottlers Machinery Company

11911 Steele Creek Road, Charlotte, North Carolina 28273

Tel: 704 588 4750 Fax 704 588 3808

Email: usb@usbottlers.com Web: www.usbottlers.com